

State of Wyoming Corner Record

(In compliance with the CORNER PERPETUATION AND FILING ACT, Wyoming Statutes, 1977, Section 36~11~101, et seq., and the Rules and Regulations of the Board of Registration for Professional Engineers and Professional Land Surveyors)

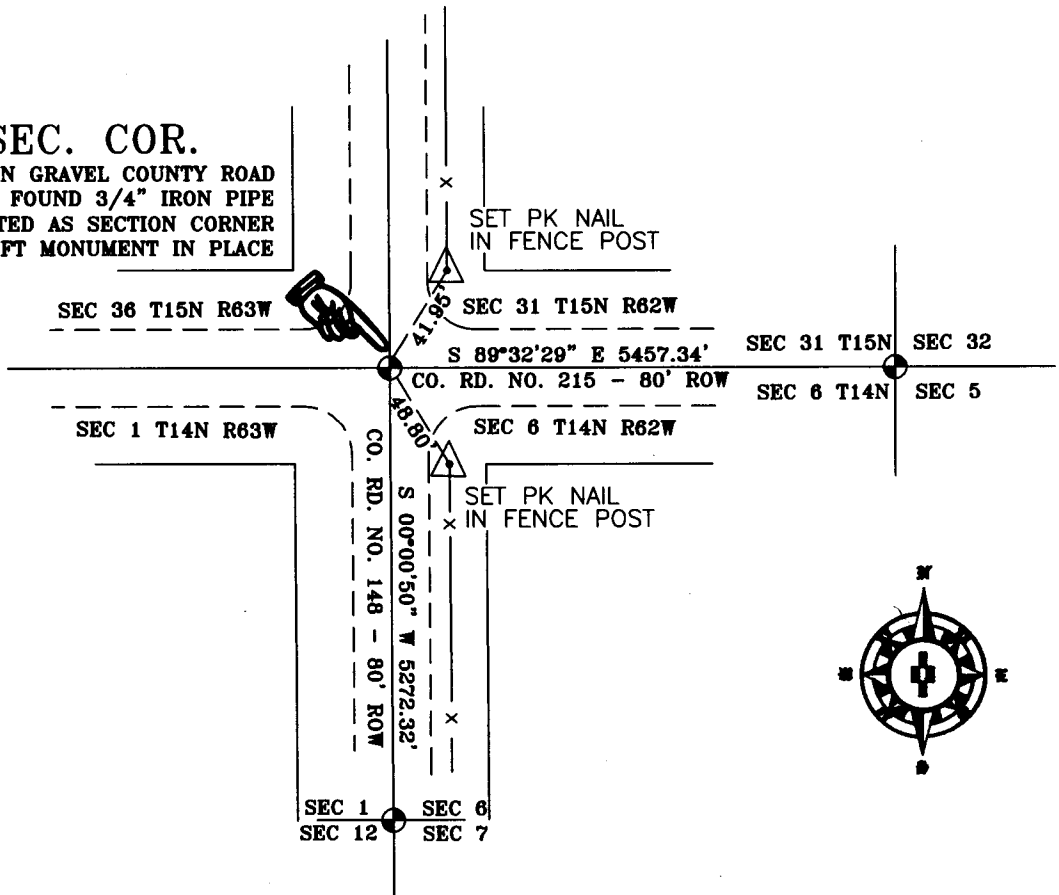
The reverse side of this form may be used if more space is needed.

The Record of the original survey and the citation of the source of the historical information (if the corner is lost or obliterated). The description of the corner monumentation evidence as found and/or the monument and it's accessories as established to perpetuate the location of this corner. A sketch of the relative location of this Monument, accessories, and reference points with the course and distance to adjacent corner (s) (if determined during this Survey). The Method and Rationale used for the reestablishment of lost and obliterated corner.

GLO: SET GRANITE STONE  
 CORNER FALLS IN GRAVEL COUNTY ROAD  
 FOUND 3/4" IRON PIPE 8" BELOW SURFACE

RECORDED 5/14/2003 AT 3:11 PM REC# 352232 K# 1726 PG# 161  
 DEBRA K. LATHROP, CLERK OF LARAMIE COUNTY, WY PAGE 1 OF 1

SEC. COR.  
 FALLS IN GRAVEL COUNTY ROAD  
 FOUND 3/4" IRON PIPE  
 ACCEPTED AS SECTION CORNER  
 LEFT MONUMENT IN PLACE



Date of Field Work: FEB. 06, 2003

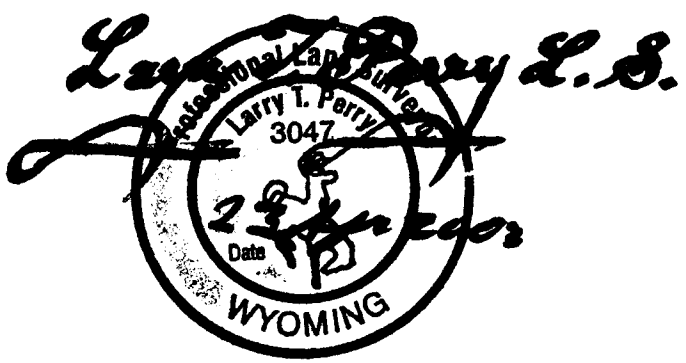
Office Reference: HART

Cross Index Diagram

	1	2	3	4	5	6	7	8	9	10	11	12	13	14	15	16	17	18	19	20	21	22	23	24	25
A																									
B																									
C																									
D																									
E																									
F																									
G																									
H																									
J																									
K																									
L																									
M																									
N																									
O																									
P																									
Q																									
R																									
S																									
T																									
U																									
V																									
W																									
X																									
Y																									
Z																									

Firm/Agency, Address  
 Terrestrial Surveying & Mapping Co.  
 "Your Friendly Neighborhood Surveyor"  
 1127 Terry Ranch Road  
 Cheyenne, Wyoming 82007  
 Telephone Number: (307) 634~9360

This Corner Record was prepared by me or under my direction and supervision.  
 SEAL & SIGNATURE



Corner Name: NWCOR. Section: 6 T. 14 N. R. 62 W. 6th P.M. Cross Index No. A-1